

Event Manager Suite



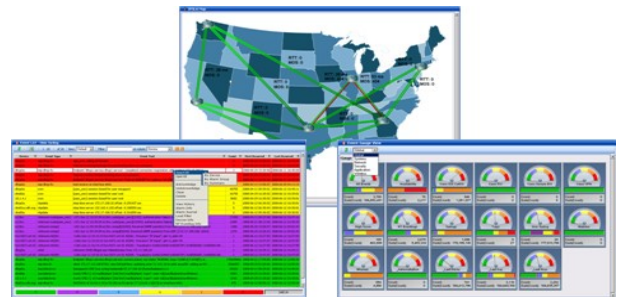
Monolith – Delivering Next Generation Monitoring for Operations

Overview

Managing an IT infrastructure is a challenging prospect. Most companies require a myriad of tools to collect and receive events, logs and messages from a constantly growing number of network, telco, voice & security devices, servers and applications. Using multiple tools for managing this event load creates a management nightmare for the IT Operations staff who are required to operate multiple independent consoles, prioritize alarms, and make sense of all the monitoring data being generated.

Monolith addresses this chaotic management challenge with its Event Manager Suite offering the industries most flexible and scalable event, fault and log management solution on the market. Monolith's Event Manager Suite was built with the latest available technology enhancements (Web 2.0, LAMP, AJAX) to compete with and replace much older technology offerings from IBM, CA, BMC and HP. Event Manager Suite offers true "Manager of Managers" functionality allowing your organization to monitor the entire infrastructure from a single, unified console.

Fault/Event Management Solution



Architecture

- 100% browser based interface, no plug-ins required, unlimited licensing
- Extreme scalability (10-20 times that of today's leading solutions)
- Built using latest standards (LAMP, AJAX, PHP, Javascript, Perl)
- Offering the industries only single code set solution across all modules
- Full Failover/Failback supporting centralized or distributed architectures
- Out-of-the-box multi-tenancy support for SP's and MSP's

Product Features and Benefits

Features

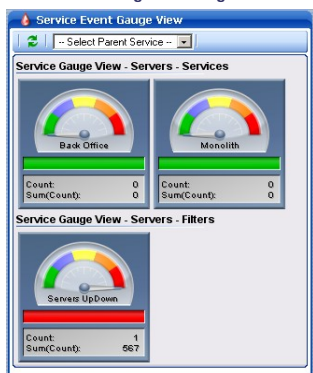
- Out-of-the-box de-duplication
- Leverages Device Catalog for dynamic filtering – Events by Meta or Device
- Advanced correlation capabilities
- Consolidates network, server, application & security events
- Web-based solution; no clients or browser plug-ins required
- Easy to use filter & search interface
- Unlimited client licenses; not per user charges
- Tracks MTTResponse and MTTRepair

Benefits

- Eliminate multiple notification tools and integration points
- Vastly improved operational efficiency
- Track Mean Times To Response and Resolution on per-incident basis
- Reduce cost of ownership
- Streamline management efforts
- Prioritize problems and reduce downtime
- Significantly reduce normal event noise

BSM/SLM

Event Manager Suite offers an ideal solution for organizations needing to perform Business Service Management / Service Level Management activities. Customers have the capability to define custom service trees / hierarchies within the solution to track the performance of key services driving their organization's success.



Filtering



Inherent within the solution are many advanced filter options – gauge views, nested gauge views, dynamic load filters, forensic viewing, quick filters, and a GUI based filter engine.

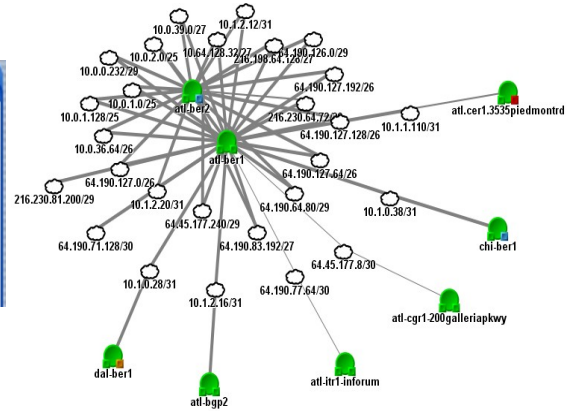
Correlation Capabilities

Built on Web 2.0 Architecture

Correlation is one of the key differentiators of event management solutions, and Event Manager Suite contains more comprehensive correlation capabilities than any offering currently on the market. Monolith's Correlation measurably impacts operational efficiency for Network Operations Centers and IT Departments by reducing downtime, quickly isolating root cause problems, and suppressing child events.

- up/down correlation
- time based correlation
- count based correlation
- X in Y correlation
- state based correlation
- probable root cause analysis
- downstream suppression of events
- parent / child association
- meta event correlation
- topology correlation
- event enrichment
- meta tag correlation
- group based correlation
- service tree correlation

Device	Event Type	Event Text	Count	First Occurred	Last Occurred
EMAIL	EmailSvcDown	Email Service Down	1	2006-10-08 08:30:45	2006-10-08 08:30:45
nodeb	DeviceUpDown	Device Down	1	2006-10-08 08:30:45	2006-10-08 08:30:45
nodea	DeviceUpDown	Device Down	1	2006-10-08 08:30:45	2006-10-08 08:30:45



PRCA – Probable Root Cause Analysis

Topology-based Root Cause Analysis

Event Manager includes the Probable Root Cause Analysis (PRCA) Engine. Monolith's PRCA engine allows organizations to perform advanced correlation of incidents in order to more rapidly isolate the root cause issue and eliminate the associated noise.

PRCA Benefits

- Downstream suppression of events
- Auto-correlation of parent/child relationships
- IP-based topology correlation
- Support for customer specific custom correlation models
- Dramatic reduction in troubleshooting time and effort

SNMP Trap MIB Compiler

SNMP Traps have always presented a challenge to organizations looking to integrate new Trap types into their event management platforms. Monolith eliminates this manual task via Event Manager's SNMP Trap MIB Compiler. The MIB Compiler for the SNMP Trap Aggregator takes standard MIB compliant files (one-by-one) and converts them to Monolith compatible rules files that are simply updated. Using this utility reduces the time required to deploy new SNMP Trap feeds by 90% or more.

Device	Event Type	Event Text	Count	First Occurred	Last Occurred
thor	DeviceUpDown	Device Down	567	2008-05-21 10:30:00	2008-05-23 09:40:00
odn	DeviceUpDown	Device Down	567	2008-05-21 10:30:00	2008-05-23 09:40:00
apollo	DeviceUpDown	Device Down	567	2008-05-21 10:30:00	2008-05-23 09:40:00

Driving Operational Efficiency

One of the primary success factors with any management and monitoring solution is its ability to drive operational efficiency. Monolith's Event Manager Suite delivers in spades. Action Manager, a key component of Event Manager Suite, was built to address the needs of operations personnel who are constantly challenged to do more with less. Action Manager consists of four key components:

- Wiki-based knowledgebase providing run book guidance for problem resolution
- Escalation/notification engine for auto-alerting of problems
- Watcher correlation engine
- CAPE (Custom Action Policy Engine) for delivering state-based correlation

Historical Event Reporting

Event Manager Suite's Event Reporter provides a historical event reporting solution. Each event is stored as an individual record, versus the de-duplicated approach of many competing products, at a fraction of normal database table size and without losing database utility. Event Reporter has a purpose-built architecture which allows it to massively scale to meet the high volume needs of large enterprises and service providers.

Contact Us

For more information on Monolith, contact us at 800-376-8308 or visit our website at www.monolith-software.com.