

Monolith Metric Manager



Monolith – Delivering Next Generation Monitoring for Operations

Overview

Capturing, analyzing and reporting on key metrics associated with IT systems health and staff efficiency are essential in order to effectively manage business operations. However, collecting and managing such information is challenging.

IT managers must consider:

- Whether the needed data exists
- Whether it is stored on one or multiple systems
- Whether the data is stored in the correct format for analysis

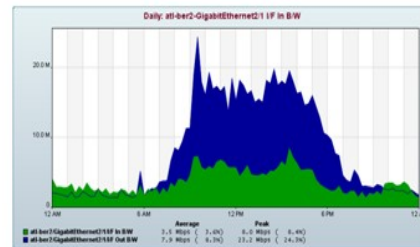
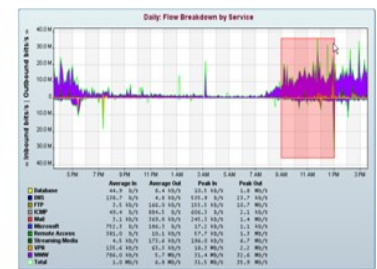
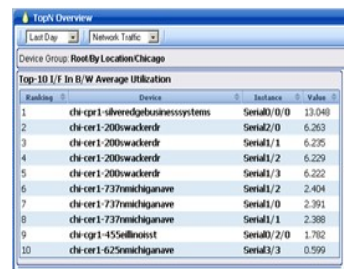
Knowing where to start in light of these issues, can be difficult.

Monolith Metric Manager was built to address metric collection and management challenges. This “Manager of Managers” for metrics provides organizations with a centralized, flexible and highly scalable system for polling, collecting & storing metrics. It’s more than just a centralized metric repository. Metric Manager allows IT managers to trend, graph, establish/monitor thresholds and report on critical availability & performance data in an easily available, highly professional manner.

Metric Manager captures metrics via pollers or collectors. Collectors allow it to capture information from current tools already in use. Many benefits to this approach include Top-N newspaper style reporting, a consistent user interface for all key metric points, centralized thresholding & notifications, and integration of data into Monolith’s Dashboard Engine.

Availability/Performance Management

Interface	Speed	Availability	Min	Max	Average	Min	Max	Average	Min	Max	Average	Min	Max	Average	Min	Max	Average	Min	Max	Average
Serial1/31	44.2 M	100.0%	4.5 M	5.340 M	14.7 M	33.225 M	38.9 M	0.000%	0.000%	0.000%	0.000%	0.000%	0.000%	0.000%	0.000%	0.000%	0.000%	0.000%	0.000%	0.000%
lgp4d1thernet2/1	382.0 M	100.0%	4.2 M	4.200 M	38.1 M	38.100 M	8.6 M	0.000%	0.000%	0.000%	0.000%	0.000%	0.000%	0.000%	0.000%	0.000%	0.000%	0.000%	0.000%	0.000%
lgp4d1thernet2/2	1.0 G	100.0%	13.9 M	1.300 M	103.1 M	10.000 M	10.1 M	0.000%	0.000%	0.000%	0.000%	0.000%	0.000%	0.000%	0.000%	0.000%	0.000%	0.000%	0.000%	0.000%
lgp4d1thernet2/3	1.0 G	100.0%	13.9 M	1.300 M	97.4 M	5.750 M	406.4 M	0.044%	0.000%	0.000%	0.000%	0.000%	0.000%	0.000%	0.000%	0.000%	0.000%	0.000%	0.000%	0.000%
lgp4d1thernet2/4	1.0 G	100.0%	9.6 M	0.950 M	33.1 M	3.020 M	1.9 M	0.000%	0.000%	0.000%	0.000%	0.000%	0.000%	0.000%	0.000%	0.000%	0.000%	0.000%	0.000%	0.000%
lgp4d1thernet2/5	1.0 G	100.0%	39.9 M	0.000 M	8.2 M	0.000 M	307.8 M	0.017%	0.000%	0.000%	0.000%	0.000%	0.000%	0.000%	0.000%	0.000%	0.000%	0.000%	0.000%	0.000%
lgp4d1thernet2/6	200.0 M	100.0%	1.2 M	0.000 M	4.3 M	0.000 M	3.6 M	0.000%	0.000%	0.000%	0.000%	0.000%	0.000%	0.000%	0.000%	0.000%	0.000%	0.000%	0.000%	0.000%
lgp4d1thernet2/7	16.1 G	0.0%	0.0	0.000 M	0.0	0.000 M	0.0	0.000%	0.000%	0.000%	0.000%	0.000%	0.000%	0.000%	0.000%	0.000%	0.000%	0.000%	0.000%	0.000%
lgp4d1thernet2/8	1.0 G	0.0%	0.0	0.000 M	0.0	0.000 M	0.0	0.000%	0.000%	0.000%	0.000%	0.000%	0.000%	0.000%	0.000%	0.000%	0.000%	0.000%	0.000%	0.000%
lgp4d1thernet2/9	1.0 G	0.0%	0.0	0.000 M	0.0	0.000 M	0.0	0.000%	0.000%	0.000%	0.000%	0.000%	0.000%	0.000%	0.000%	0.000%	0.000%	0.000%	0.000%	0.000%
lgp4d1thernet2/10	1.0 G	0.0%	0.0	0.000 M	0.0	0.000 M	0.0	0.000%	0.000%	0.000%	0.000%	0.000%	0.000%	0.000%	0.000%	0.000%	0.000%	0.000%	0.000%	0.000%
lgp4d1thernet2/11	1.0 G	0.0%	0.0	0.000 M	0.0	0.000 M	0.0	0.000%	0.000%	0.000%	0.000%	0.000%	0.000%	0.000%	0.000%	0.000%	0.000%	0.000%	0.000%	0.000%
lgp4d1thernet2/12	1.0 G	0.0%	0.0	0.000 M	0.0	0.000 M	0.0	0.000%	0.000%	0.000%	0.000%	0.000%	0.000%	0.000%	0.000%	0.000%	0.000%	0.000%	0.000%	0.000%
lgp4d1thernet2/13	1.0 G	0.0%	0.0	0.000 M	0.0	0.000 M	0.0	0.000%	0.000%	0.000%	0.000%	0.000%	0.000%	0.000%	0.000%	0.000%	0.000%	0.000%	0.000%	0.000%
lgp4d1thernet2/14	1.0 G	0.0%	0.0	0.000 M	0.0	0.000 M	0.0	0.000%	0.000%	0.000%	0.000%	0.000%	0.000%	0.000%	0.000%	0.000%	0.000%	0.000%	0.000%	0.000%
lgp4d1thernet2/15	1.0 G	0.0%	0.0	0.000 M	0.0	0.000 M	0.0	0.000%	0.000%	0.000%	0.000%	0.000%	0.000%	0.000%	0.000%	0.000%	0.000%	0.000%	0.000%	0.000%
lgp4d1thernet2/16	1.0 G	0.0%	0.0	0.000 M	0.0	0.000 M	0.0	0.000%	0.000%	0.000%	0.000%	0.000%	0.000%	0.000%	0.000%	0.000%	0.000%	0.000%	0.000%	0.000%
lgp4d1thernet2/17	1.0 G	0.0%	0.0	0.000 M	0.0	0.000 M	0.0	0.000%	0.000%	0.000%	0.000%	0.000%	0.000%	0.000%	0.000%	0.000%	0.000%	0.000%	0.000%	0.000%
lgp4d1thernet2/18	1.0 G	0.0%	0.0	0.000 M	0.0	0.000 M	0.0	0.000%	0.000%	0.000%	0.000%	0.000%	0.000%	0.000%	0.000%	0.000%	0.000%	0.000%	0.000%	0.000%
lgp4d1thernet2/19	1.0 G	0.0%	0.0	0.000 M	0.0	0.000 M	0.0	0.000%	0.000%	0.000%	0.000%	0.000%	0.000%	0.000%	0.000%	0.000%	0.000%	0.000%	0.000%	0.000%
lgp4d1thernet2/20	1.0 G	0.0%	0.0	0.000 M	0.0	0.000 M	0.0	0.000%	0.000%	0.000%	0.000%	0.000%	0.000%	0.000%	0.000%	0.000%	0.000%	0.000%	0.000%	0.000%
lgp4d1thernet2/21	1.0 G	0.0%	0.0	0.000 M	0.0	0.000 M	0.0	0.000%	0.000%	0.000%	0.000%	0.000%	0.000%	0.000%	0.000%	0.000%	0.000%	0.000%	0.000%	0.000%
lgp4d1thernet2/22	1.0 G	0.0%	0.0	0.000 M	0.0	0.000 M	0.0	0.000%	0.000%	0.000%	0.000%	0.000%	0.000%	0.000%	0.000%	0.000%	0.000%	0.000%	0.000%	0.000%
lgp4d1thernet2/23	1.0 G	0.0%	0.0	0.000 M	0.0	0.000 M	0.0	0.000%	0.000%	0.000%	0.000%	0.000%	0.000%	0.000%	0.000%	0.000%	0.000%	0.000%	0.000%	0.000%
lgp4d1thernet2/24	1.0 G	0.0%	0.0	0.000 M	0.0	0.000 M	0.0	0.000%	0.000%	0.000%	0.000%	0.000%	0.000%	0.000%	0.000%	0.000%	0.000%	0.000%	0.000%	0.000%



Product Features and Benefits

Features

- Auto-discovery and Auto-configuration engine
- Leverages data from existing systems
- Eliminates multiple interfaces & consolidates third-party tools into single interface
- Centralized configuration
- Supports distributed pollers and overlapping IP address ranges
- Dynamically generates Top-N overview reports
- Provides standard data trending (day/week/month/year)
- Supports configurable data storage retention policies
- Reporting support for ad hoc & scheduled reports, custom time frames, multiple metric comparisons

Benefits

- Performs organizational-wide performance reporting
- Much lower cost of ownership than competing tools
- Vastly improves operational efficiency
- Highly scalable event management
- Supports any metric type, format and feed

The Monolith Advantage

For most organizations, an effective, centralized metric reporting solution is unattainable. The highly specialized nature of the toolsets used by each division – the network team utilizing a specific SNMP polling solution, the server team leveraging a different platform and the application group utilizing yet another – essentially prohibits consolidation and presentation of metric data across systems. Monolith's Metric Manager addresses this challenge head on. By leveraging current tool sets, filling the gaps where metrics are not being collected, and bundling disparate solutions into a single, powerful presentation interface, organizations can now deliver on the promise of centralized metric management. The benefits are substantial. Organizations can now rely on a single system to review Top N reports, provide consistent reporting formats, set corporate-wide thresholds, and integrate with event management platforms and notification policies.

Metric Manager Highlights

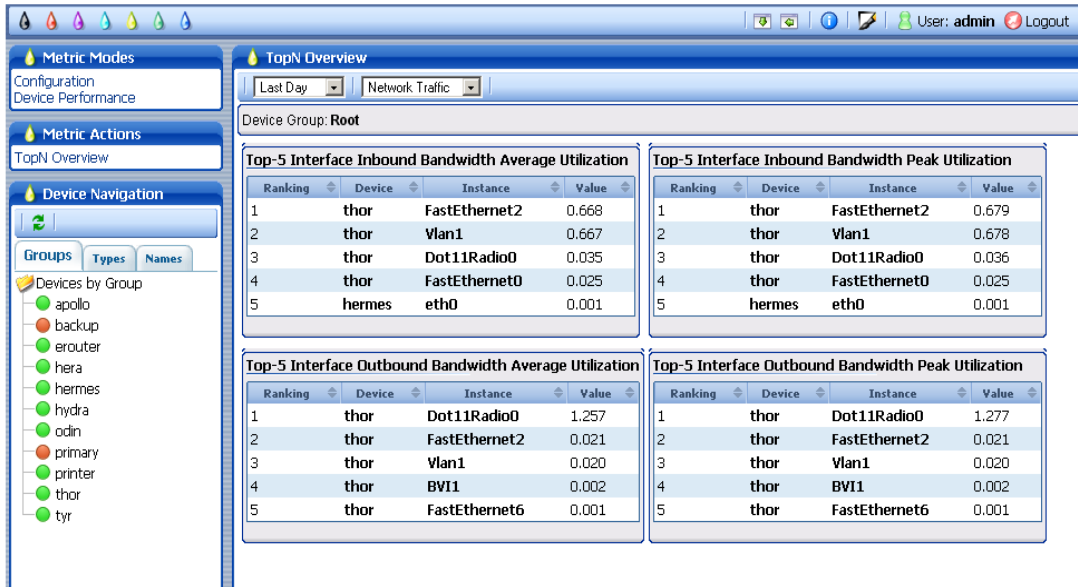
Built on Web 2.0 Architecture

The configuration and deployment of performance management solutions is not a trivial task. Metric Manager brings unprecedented ease-of-configuration to the market through its comprehensive out-of-the-box auto-discovery and auto-configuration capabilities.

Monolith's device discovery engine automatically finds and types discovered devices. Metric Manager utilizes this discovery to automatically deploy polling templates and set predefined threshold policies. Discovery features include regmatch device name, instance name, custom meta tags, IP range, device type and device category.

ITIL Practitioner Support

Monolith Metric Manger can serve as an organization's CDB or Capacity Management Database. ITIL calls for a centralized CDB that allows an organization to build the most cost effective system to meet the performance requirements for your organization.



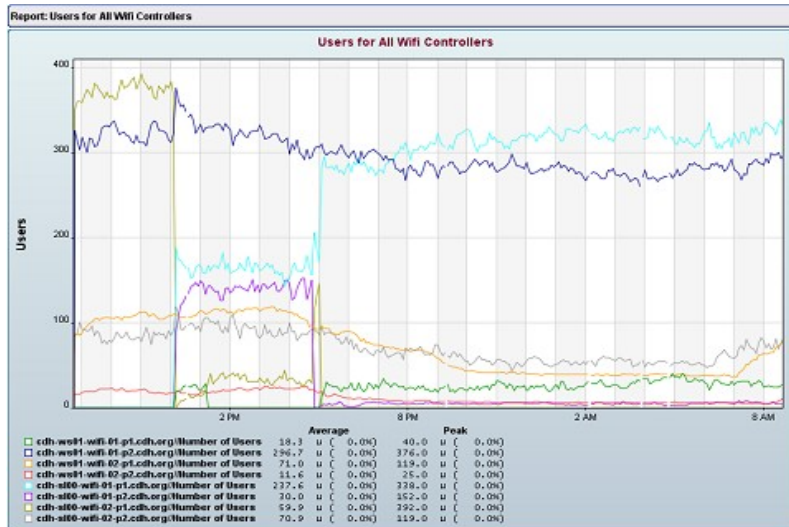
Transactional Polling

Monitor the availability and performance of distributed IT infrastructure components and standard services such as HTTP, DNS, DHCP, NTP, as well as custom services and transactions. IT infrastructure targets can be continually monitored through the Metric Manager web-based interface.

With real-time Transactional Polling data IT engineers can:

- Verify infrastructure operations
- Stay apprised of problems
- Solve bottlenecks before they impact business

Top-N Overview



Dynamic Reporting

Monolith Metric Manager offers ready-made reports for quick system-health snapshots while customized reports provide for more tailored analysis.

Ad-Hoc Reporting

Ad Hoc reporting functionality compares multiple metrics on the same graph. This is useful when comparing similar metrics on different devices. Use Ad-Hoc Reporting to compare CPU utilization on multiple servers, bandwidth on multiple WAN links, and application response times from different locations.

Historical Reporting

Use the historical reporting engine to customers to design, build, schedule and automatically email reports. Monolith provides an easy to use web-based interface for building and scheduling these reports.

Trending and Graphing Metrics

Sample Metric Components List

Pollers

- ICMP Ping
- Generic SNMP
- SNMP Cisco Health
- WMI poller
- SNMP Network Traffic
- SNMP Cisco IP SLA

Collectors

- Generic SOAP
- Generic TCP Client/Server
- Generic Flat File
- Generic Database

Agents

- Generic Command-line
- Synthetic Transaction (WinTask)

Known Integration

- Microsoft MOM
- Zabbix
- Hyperic
- SolarWinds

Connectors

- Generic Database